



Co-funded by the
Erasmus+ Programme
of the European Union



SMARTCITY

Innovative Approach Towards a Master
Program on Smart Cities Technologies



Erasmus+ project “SMARTCITY: Innovative Approach Towards a Master Program”

The project 598317-EPP-1-2018-1-BG-EPPKA2-CBHE-JP

Teachers training event in e- learning

Riga Technical University 12/1 508, Azenes Street Riga,
Latvia

February 17th – 21th, 2020



Schedule	Activity	Responsible contact
Monday February 17th 9.00 – 10:00 off. 508	Overview schedule + main goals of mobility program.	Prof. N.Kunicina, Dr. A.Zabasta,
Monday February 17 th 10.00 – 14.00	Master class - RTU laboratory house	Head of Laboratories A.Avotins
<i>14:00-15:00 Lunch (self-choice)</i>		
Monday February 17 th 15.00 – 17.00	Visit to RTU laboratories	Head of Laboratories A.Avotins
Tuesday, February 18th 9.00 – 11.00, off.508	Cooperation agreements, Diploma defence, Latvian ID, presentation of education system, e – defendance of Master thesis	Prof A. Ziravecka, Prof. N. Kunicina, Dr A. Zabasta
Tuesday, <i>February 18th</i> 11.00 – 13.00, off. 508	NUM – education process, requirements for double degree programs.	Uyanga Sambuu
<i>13:00-14:30 Lunch (self-choice)</i>		
Tuesday, <i>February 18th</i> 14.30 – 16.00, off. 508	Active use of a e- learning environment: - Introduction to digital didactics - Examples of digital learning environments: - Practical exercise with course materials	Prof. Peteris Apse - Apsitis
Wednesday February 19th 9.00 – 14.00, off.522	Active use of a e- learning environment – master class transport flow planning	Prof. Andrejs Romanovs
<i>14:00-15:00 Lunch (self-choice)</i>		
Wednesday February 19 th 15.00 – 17.00, Kronvalda Bulvaris 1a	Visit to RTU Engineering High School and Faculty of E-Learning Technologies and Humanities	Head of Laboratories A.Avotiņš, Director of Engineering High School Dr S.Medne



Thursday February 20th 9.00 – 10.00, off.508	Round table: Latvian ID, e – defendance of Master thesis	Dr. A.Zabašta, Prof. N. Kunicina.
Tuesday, <i>February 20th</i> 10.00-12.00, 522	E – learning – master class	Prof A. Ziravecka
<i>12:00-13:30 Lunch (self- choice)</i>		
<i>Tuesday, February 20th</i> 13:30-15:30 508	Students presentations, quality assurance	Bayarjargal Bud Bilguun Ganbaatar Dariimaa Otgon Erkhbayar Batmunkh Nyamkhuu Buyanjargal Tenuun Dovdon
Riga e- city campus.	Visit to e-city in RTU filial in Riga e- city campus.	Dr. A.Zabašta, Prof. N. Kunicina, Dr. N. Zeņina, Executive Director of Latvian Internet Association I.Gudele.
Friday February 21th 09.00 – 11.00 Azenes 12/1 - 522	E- courses/ master class Control theory	Assoc prof. V.Brazis,
11.00 – 13.00 Azenes 12/1 - 522	E- courses/ master class Embedded systems and microcontroller	prof. I. Galkins,
<i>13:00-14:00 Lunch (self- choice)</i>		
<i>14:00 – 15:30 Azenes 12/1 - 508</i>	E- courses/ master class Electrical engineering and automation	Assoc. prof. Janis Zakis
<i>15:30 – 16:00 Azenes 12/1 - 508</i>	Wrap up - closing meeting	Prof. N.Kunicina, Dr. A.Zabasta



Co-funded by the
Erasmus+ Programme
of the European Union



SMARTCITY

Innovative Approach Towards a Master
Program on Smart Cities Technologies



Information about local organizer

The training will be hosted by the Institute of Industrial Electronics and Electrical Engineering, Faculty of Power and Electrical Engineering of Riga Technical University (www.rtu.lv) that is the largest public university in Latvia.

The training will be held in the building of the [Faculty of Power and Electrical Engineering](#) of [Riga Technical University](#): Latvia, Riga, Azenes str. 12, building 1, off. 508/ 503

The local organizing committee:

Professor, Dr.sc.ing. Nadezhda Kunicina
GSM: +371 26162662
Nadezda.Kunicina@rtu.lv

Dr.sc.ing. Anatolijs Zabashta
GSM: +371 29232872
Anatolijs.Zabasta@rtu.lv

Professor Dr.sc.ing. Anastasija Žiravecka
GSM: +371 29682242
Anastasija.Ziravecka@rtu.lv



Transportation & Hotels

The airport in Latvia is **Riga airport**: <http://www.riga-airport.com/>

The national air company is **Air Baltic** <http://www.airbaltic.lv>

Transport from/to airport:

Bus No. 22 (if you choose this transport you have to change to bus 53 on one of 3 bus stops RMR; Pasts or Melsila iela) you have to buy ticket in Narvesen kiosks 2nd floor of terminal departures hall, or in the bus from driver directly

You have to leave bus Nr 53 on stop Preses nams.





Co-funded by the
Erasmus+ Programme
of the European Union



SMARTCITY

Innovative Approach Towards a Master
Program on Smart Cities Technologies



Riga public transport (bus, trolleybus, and tram) operates an electronic payment system, or e-ticket (e-talons). Every time, when entering a public transport vehicle, a passenger has to apply his/her e-ticket to the validator until the ticket's validity period and the number of remaining trips are displayed on the validator screen, the green signal lights up and a short signal sounds. Validators are located inside public transport vehicles, next to every door. In case of having no e-ticket, a passenger has to buy one-time ticket from the vehicle's driver.

In Riga public transport (except bus No. 22), you have also to pay for carrying luggage with the total of sizes (length, height and width) exceeding 200 cm. Luggage tickets are available from the vehicle driver.

You can buy e-tickets at press kiosks "Narvesen" public transport terminals, special ticket vending machines, customer service centres and other trade outlets marked as selling e-tickets. www.rigassatiksmelv

To reach venue place (or hotel Islande, please use Baltic shuttle bus or taxi)

<http://saraksti.rigassatiksmelv/index.html#bus/22/b-a/en>

Directions you have to tell taxi driver – direction "KIPSALA"

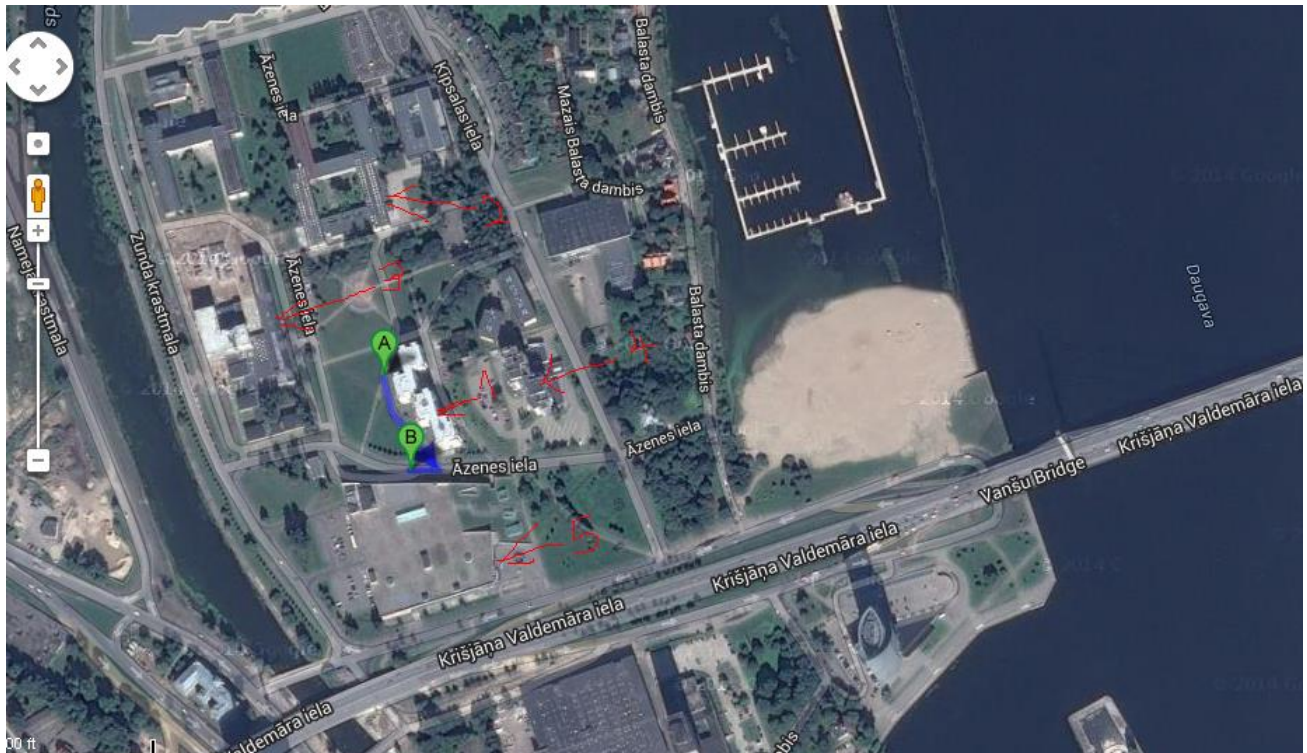
1. RTU Hostel- 6 Azenes Str., Riga phone +371 67089268; +371 26435882
3. RTU Faculty of Power and Electrical Engineering and, Azenes str. 12, building 1
4. Islande hotel; www.islandehotel.lv



Co-funded by the Erasmus+ Programme of the European Union



SMARTCITY
Innovative Approach Towards a Master Program on Smart Cities Technologies



RTU Hostel Azenes 6 Riga



Food

A student canteen is allocated at the 1st floor of the Faculty of Power and Electrical Engineering, Azenes str. 12/1. Its working time 8.00 – 17.00. The canteen offers complex lunch with the price 2.80 and 3.00 euro per person.

Another option is the shopping centre Olimpia across the street, where you can find a lot of café at the 2nd floor.